



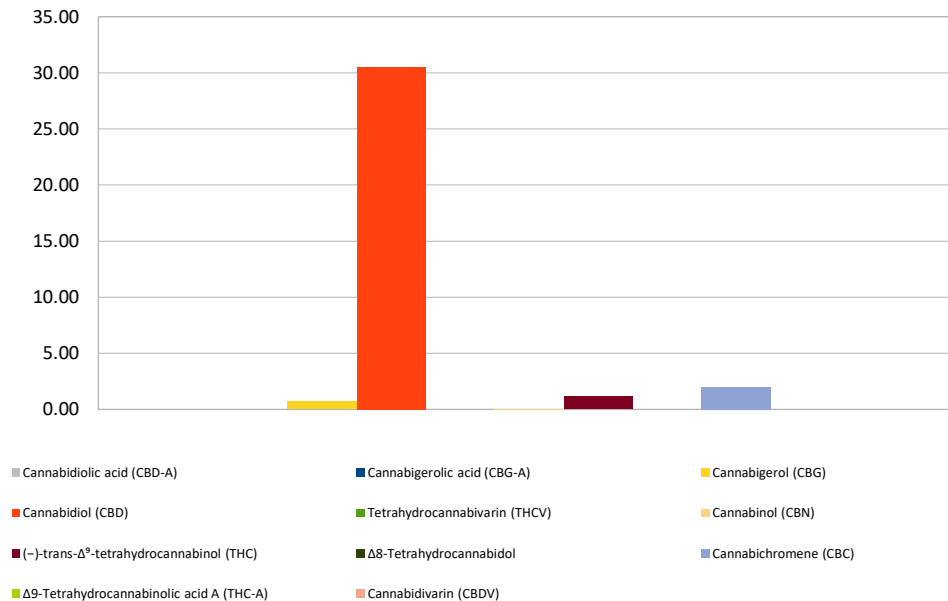
Cannabinoid Profile

Customer: Americas Finest CBD
Customer Sample ID: AFC FS Gel Cap A136
Laboratory Number: 201902-1120
Extraction Technician: RH
Analytical Chemist: MF

Extraction Date(s):	Analysis Date(s)
2/26/2019	2/26/2019

Cannabinoid (HPLC)		Results	
	LOD (mg/g)	Percent	mg/g
Cannabidivarin (CBDV)	<0.2		
Cannabidiolic acid (CBD-A)	<0.2		
Cannabigerolic acid (CBG-A)	<0.2		
Cannabigerol (CBG)		0.07%	0.71
Cannabidiol (CBD)		3.05%	30.55
Tetrahydrocannabivarin (THCV)	<0.2		
Cannabinol (CBN)		0.01%	0.05
(-)-trans- Δ^9 -tetrahydrocannabinol (THC)		0.12%	1.16
Δ^8 -Tetrahydrocannabinol	<0.2		
Cannabichromene (CBC)		0.20%	1.98
Δ^9 -Tetrahydrocannabinolic acid A (THC-A)	<0.2		
Cannabinoids Total		Percent	mg/g
Max Active THC		0.12%	1.16
Max Active CBD		3.05%	30.55
T. Active Cannabinoids		3.45%	34.45
Total Cannabinoids		3.45%	34.45
Ratios			
26.39 CBD to THC		0.04 :1 THC to CBD	

Cannabinoid (mg/g)



Altitude Consulting, LLC utilizes NIST traceable Reference Standards and Certified Reference Material to calibrate analytical instruments along with proven analytical methods. The methods are applied in the most ethical manner following good laboratory practice guidelines. The results of this report are based solely on the sample submitted and cannot be reproduced.

This report expires 30 days after analysis date.



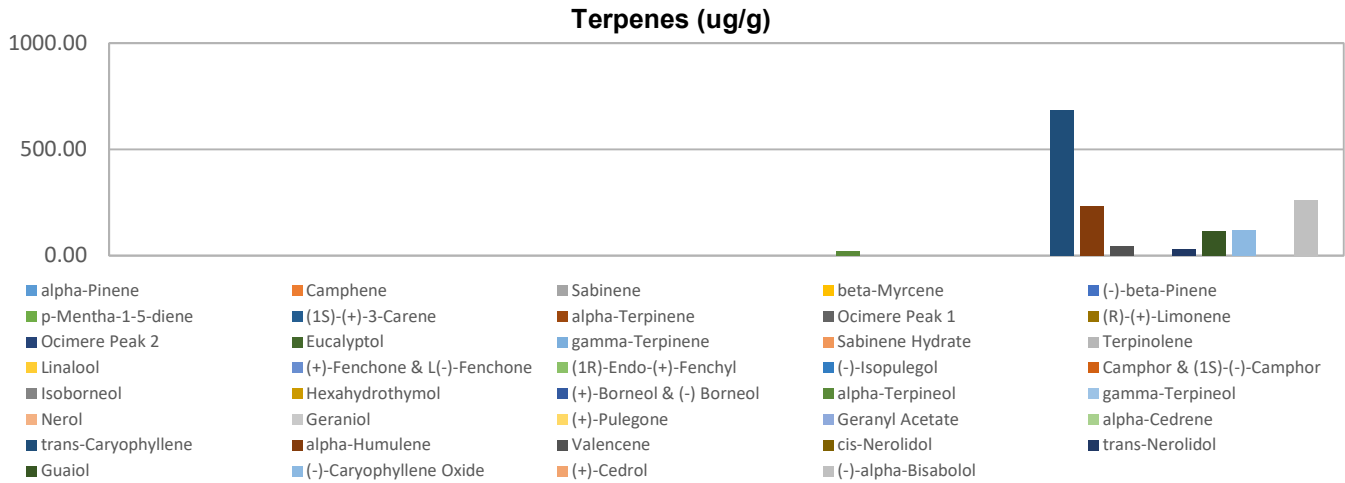
Terpenes Profile

Customer: Americas Finest CBD
Customer Sample ID: AFC FS Gel Cap A136
Laboratory Number: 201902-1120
Extraction Technician: RH
Analytical Chemist: MF

Extraction Date(s):	Analysis Date(s)
2/26/2019	2/26/2019

Terpene	Results ug/g	Terpene	Results ug/g
alpha-Pinene		Isoborneol	
Camphene		Hexahydrothymol	
Sabinene		(+)-Borneol & (-) Borneol	
beta-Myrcene		alpha-Terpineol	19.32
(-)-beta-Pinene		gamma-Terpineol	
p-Mentha-1-5-diene		Nerol	
(1S)-(+)-3-Carene		Geraniol	
alpha-Terpinene		(+)-Pulegone	
Ocimere Peak 1		Geranyl Acetate	
(R)-(+)-Limonene		alpha-Cedrene	
Ocimere Peak 2		trans-Caryophyllene	684.47
Eucalyptol		alpha-Humulene	235.05
gamma-Terpinene		Valencene	44.27
Sabinene Hydrate		cis-Nerolidol	
Terpinolene		trans-Nerolidol	27.69
Linalool		Guaiol	113.95
(+)-Fenchone & L(-)-Fenchone		(-)-Caryophyllene Oxide	122.47
(1R)-Endo-(+)-Fenchyl		(+)-Cedrol	
(-)-Isopulegol		(-)-alpha-Bisabolol	260.00
Camphor & (1S)-(-)-Camphor			

Empty result indicates data is less than detection limit. Reporting Limit is roughly 40 ug/g depending on amount extracted.



Altitude Consulting, LLC utilizes NIST traceable Reference Standards and Certified Reference Material to calibrate analytical instruments along with proven analytical methods. The methods are applied in the most ethical manner following good laboratory practice guidelines. The results of this report are based solely on the sample submitted and cannot be reproduced.



This report expires 30 days after analysis date.

Terpenes Profile