



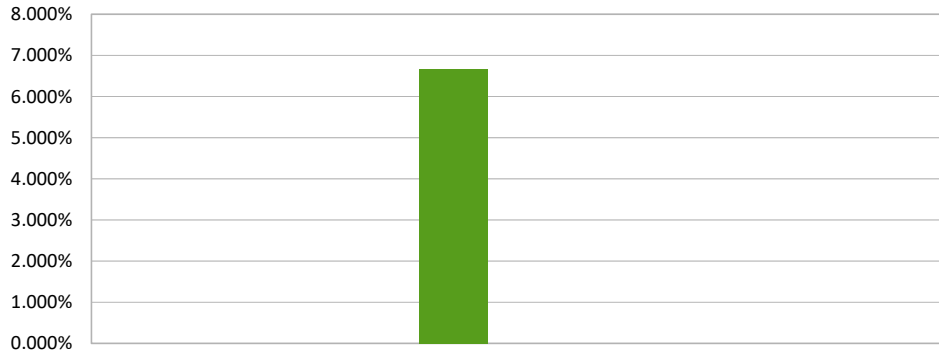
Cannabinoid Profile

Customer: Americas Finest CBD
Customer Sample ID: AFC 2000mg Iso Tincture 041619
Laboratory Number: 201904-0997
Extraction Technician: MTO
Analytical Chemist: GB
Servings per Bottle: 30.0
Density: 0.940

Extraction Date(s):	Analysis Date(s)
4/16/2019	4/16/2019

Cannabinoid (HPLC)	Results			
	LOD mg/g	Percent	mg/mL	mg/Bottle
Cannabidiol (CBD)	<0.1	6.668%	66.68	2000.3
Tetrahydrocannabivarin (THCV)	<0.1			
Cannabinol (CBN)	<0.1			
(-)-trans-Δ ⁹ -tetrahydrocannabinol (THC)	<0.1			
Δ ⁸ -Tetrahydrocannabidiol	<0.1			
Cannabichromene (CBC)	<0.1			
Δ ⁹ -Tetrahydrocannabinolic acid A (THC-A)	<0.1			
Cannabinoids Total		Percent	mg/mL	
Max Active THC		0.00%	0.00	
Max Active CBD		6.67%	66.68	
T. Active Cannabinoids		6.67%	66.68	
Total Cannabinoids		6.67%	66.68	
Ratios				
NA :1 CBD to THC		0.00 :1 THC to CBD		

Cannabinoid (%)



- Cannabidiol (CBD)
- Cannabidiolic acid (CBD-A)
- Cannabigerolic acid (CBG-A)
- Cannabigerol (CBG)
- Cannabidiol (CBD)
- Tetrahydrocannabivarin (THCV)
- Cannabinol (CBN)
- (-)-trans-Δ⁹-tetrahydrocannabinol (THC)
- Δ⁸-Tetrahydrocannabidiol
- Cannabichromene (CBC)
- Δ⁹-Tetrahydrocannabinolic acid A (THC-A)

Altitude Consulting, LLC utilizes NIST traceable Reference Standards and Certified Reference Material to calibrate analytical instruments along with proven analytical methods. The methods are applied in the most ethical manner following good laboratory practice guidelines. The results of this report are based solely on the sample submitted and cannot be reproduced.

This report expires 30 days after analysis date.



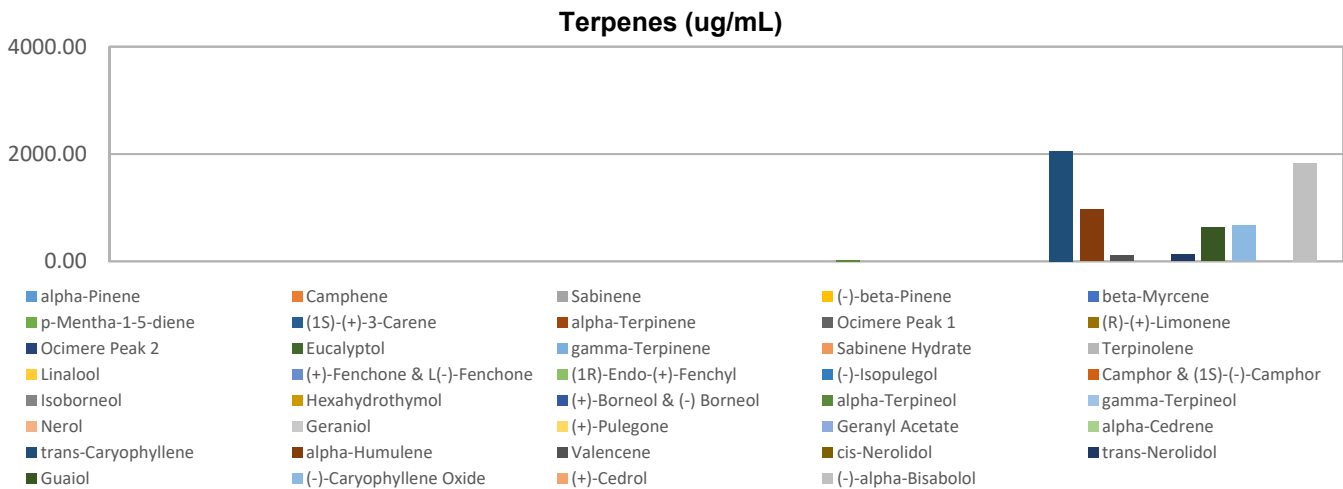
Terpenes Profile

Customer: Americas Finest CBD
Customer Sample ID: AFC 2000mg Iso Tincture 041619
Laboratory Number: 201904-0997
Extraction Technician: MTO
Analytical Chemist: GB
Density (g/mL): 0.940

Extraction Date(s)	Analysis Date(s)
4/15/2019	4/15/2019

Terpene	Results	Terpene	Results
	ug/mL		ug/mL
alpha-Pinene		Isoborneol	
Camphene		Hexahydrothymol	
Sabinene		(+)-Borneol & (-) Borneol	
(-)-beta-Pinene		alpha-Terpineol	28.61
beta-Myrcene		gamma-Terpineol	
p-Mentha-1-5-diene		Nerol	
(1S)-(+)-3-Carene		Geraniol	
alpha-Terpinene		(+)-Pulegone	
Ocimere Peak 1		Geranyl Acetate	
(R)-(+)-Limonene		alpha-Cedrene	
Ocimere Peak 2		trans-Caryophyllene	2052.61
Eucalyptol		alpha-Humulene	968.07
gamma-Terpinene		Valencene	105.57
Sabinene Hydrate		cis-Nerolidol	
Terpinolene		trans-Nerolidol	126.43
Linalool		Guaiol	630.12
(+)-Fenchone & L(-)-Fenchone		(-)-Caryophyllene Oxide	667.59
(1R)-Endo-(+)-Fenchyl		(+)-Cedrol	
(-)-Isopulegol		(-)-alpha-Bisabolol	1837.03
Camphor & (1S)-(-)-Camphor			

Empty result indicates data is less than detection limit. Reporting Limit is roughly 100 ug/mL depending on amount extracted.



Altitude Consulting, LLC utilizes NIST traceable Reference Standards and Certified Reference Material to calibrate analytical instruments along with proven analytical methods. The methods are applied in the most ethical manner following good laboratory practice guidelines. The results of this report are based solely on the sample submitted and cannot be reproduced.

This report expires 30 days after analysis date.