

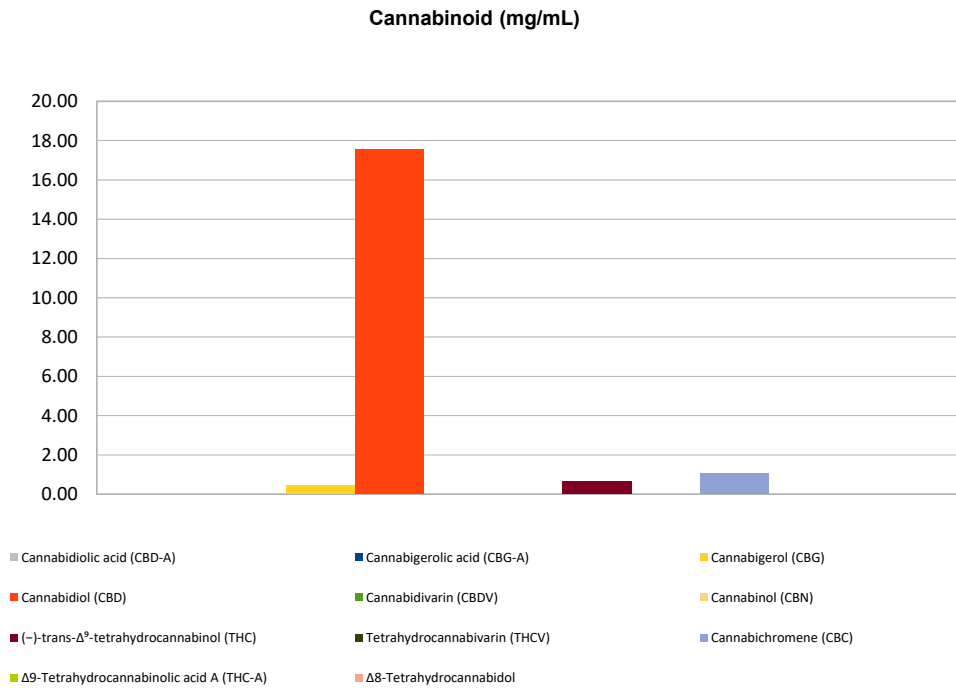


# Cannabinoid Profile

**Customer:** Americas Finest  
**Customer Sample ID:** AFC 500mg Full Spectrum A151  
**Laboratory Number:** 201901-0502  
**Extraction Technician:** RH  
**Analytical Chemist:** GB  
**Density (g/mL):** 0.956

Extraction Date(s):	Analysis Date(s)
1/15/2019	1/15/2019

Cannabinoid (HPLC)	Results		
	LOD (mg/g)	Percent	mg/mL
Δ8-Tetrahydrocannabinol	<0.2		
Cannabidiolic acid (CBD-A)	<0.2		
Cannabigerolic acid (CBG-A)	<0.2		
Cannabigerol (CBG)		0.046%	0.44
Cannabidiol (CBD)		1.836%	17.56
Cannabidivarin (CBDV)	<0.2		
Cannabinol (CBN)	<0.2		
(-)-trans-Δ <sup>9</sup> -tetrahydrocannabinol (THC)		0.066%	0.63
Tetrahydrocannabivarin (THCV)	<0.2		
Cannabichromene (CBC)		0.111%	1.06
Δ9-Tetrahydrocannabinolic acid A (THC-A)	<0.2		
Cannabinoids Total		Percent	mg/g
<b>Max Active THC</b>		<b>0.07%</b>	<b>0.66</b>
<b>Max Active CBD</b>		<b>1.84%</b>	<b>18.36</b>
<b>T. Active Cannabinoids</b>		<b>2.06%</b>	<b>20.60</b>
<b>Total Cannabinoids</b>		<b>2.06%</b>	<b>20.60</b>
Ratios			
<b>27.92</b>		<b>:1 CBD to THC</b>	<b>0.04 :1 THC to CBD</b>



Altitude Consulting, LLC utilizes NIST traceable Reference Standards and Certified Reference Material to calibrate analytical instruments along with proven analytical methods. The methods are applied in the most ethical manner following good laboratory practice guidelines. The results of this report are based solely on the sample submitted and cannot be reproduced.



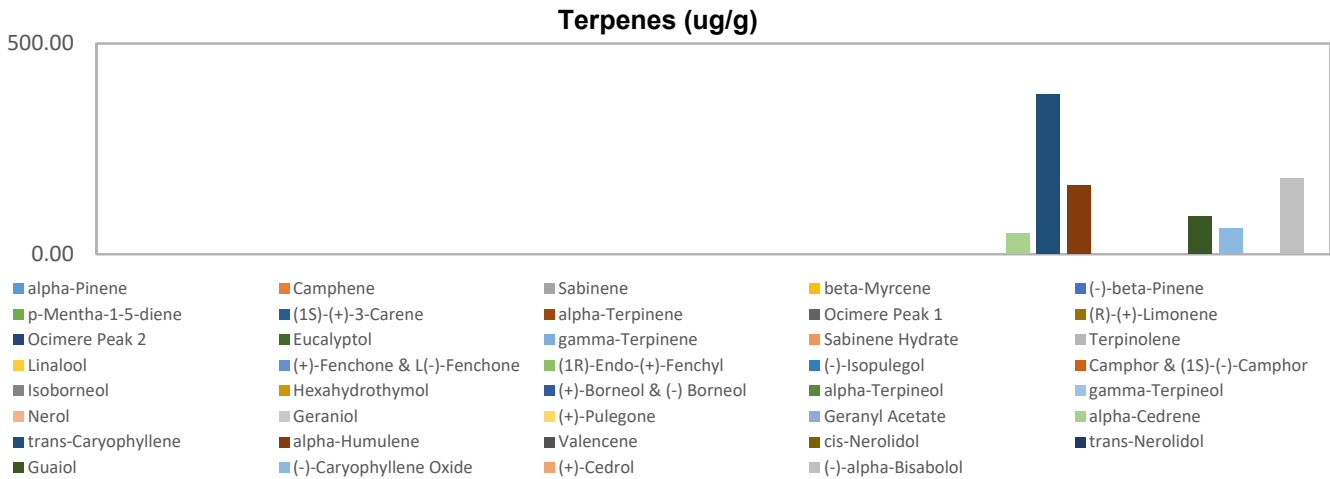
# Terpenes Profile

**Customer:** Americas Finest  
**Customer Sample ID:** AFC 500mg Full Spectrum A151  
**Laboratory Number:** 201901-0502  
**Extraction Technician:** RH  
**Analytical Chemist:** GB

Extraction Date(s)	Analysis Date(s)
1/16/2018	1/16/2018

Terpene	Results ug/g	Terpene	Results ug/g
alpha-Pinene		Isoborneol	
Camphene		Hexahydrothymol	
Sabinene		(+)-Borneol & (-) Borneol	
beta-Myrcene		alpha-Terpineol	
(-)-beta-Pinene		gamma-Terpineol	
p-Mentha-1-5-diene		Nerol	
(1S)-(+)-3-Carene		Geraniol	
alpha-Terpinene		(+)-Pulegone	
Ocimere Peak 1		Geranyl Acetate	
(R)-(+)-Limonene		alpha-Cedrene	49.62
Ocimere Peak 2		trans-Caryophyllene	378.95
Eucalyptol		alpha-Humulene	162.46
gamma-Terpinene		Valencene	
Sabinene Hydrate		cis-Nerolidol	
Terpinolene		trans-Nerolidol	
Linalool		Guaiol	88.84
(+)-Fenchone & L(-)-Fenchone		(-)-Caryophyllene Oxide	60.42
(1R)-Endo-(+)-Fenchyl		(+)-Cedrol	
(-)-Isopulegol		(-)-alpha-Bisabolol	179.27
Camphor & (1S)-(-)-Camphor			

Empty result indicates data is less than detection limit. Reporting Limit is roughly 40 ug/g depending on amount extracted.



Altitude Consulting, LLC utilizes NIST traceable Reference Standards and Certified Reference Material to calibrate analytical instruments along with proven analytical methods. The methods are applied in the most ethical manner following good laboratory practice guidelines. The results of this report are based solely on the sample submitted and cannot be reproduced.