



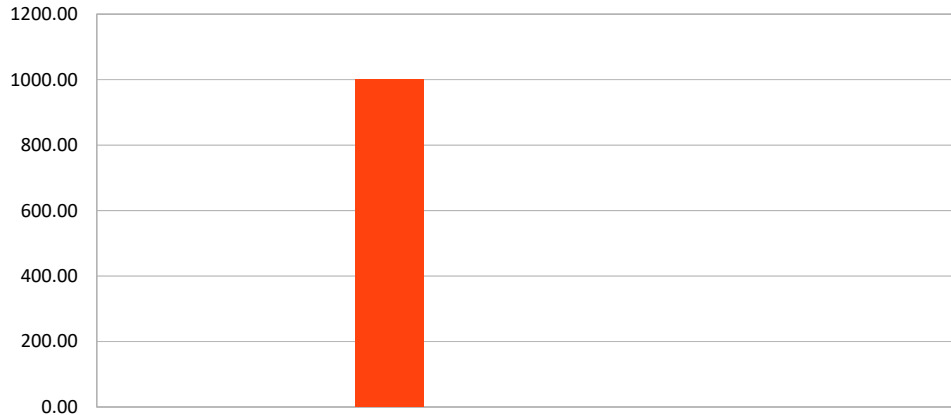
# Cannabinoid Profile

**Customer:** America's Finest CBD  
**Customer Sample ID:** Iso Batch BL 1903A010  
**Laboratory Number:** 201903-1520RE  
**Extraction Technician:** GB  
**Analytical Chemist:** GB

Extraction Date(s):	Analysis Date(s)
3/29/2019	3/29/2019

Cannabinoid (HPLC)	Results		
	LOD (mg/g)	Percent	mg/g
Cannabidiol (CBD)	<0.2	100%	1000.00
Tetrahydrocannabivarin (THCV)	<0.2		
Cannabinol (CBN)	<0.2		
(-)-trans- $\Delta^8$ -tetrahydrocannabinol (THC)	<0.2		
$\Delta^8$ -Tetrahydrocannabidol	<0.2		
Cannabichromene (CBC)	<0.2		
$\Delta^9$ -Tetrahydrocannabinolic acid A (THC-A)	<0.2		
Cannabidiolic acid (CBDV)	<0.2		
Cannabigerolic acid (CBG-A)	<0.2		
Cannabigerol (CBG)	<0.2		
Cannabinoids Total	Percent	mg/g	
<b>Max Active THC</b>	<b>0.00%</b>	<b>0.00</b>	
<b>Max Active CBD</b>	<b>100%</b>	<b>1000</b>	
<b>T. Active Cannabinoids</b>	<b>100%</b>	<b>1000</b>	
<b>Total Cannabinoids</b>	<b>100%</b>	<b>1000</b>	
Ratios			
<b>NA CBD to THC</b>		<b>0.00 :1 THC to CBD</b>	

Cannabinoid (mg/g)



- Cannabidiolic acid (CBD-A)
- Cannabigerolic acid (CBG-A)
- Cannabigerol (CBG)
- Cannabidiol (CBD)
- Tetrahydrocannabivarin (THCV)
- Cannabinol (CBN)
- (-)-trans- $\Delta^8$ -tetrahydrocannabinol (THC)
- $\Delta^8$ -Tetrahydrocannabidol
- Cannabichromene (CBC)
- $\Delta^9$ -Tetrahydrocannabinolic acid A (THC-A)
- Cannabidiol (CBDV)

Altitude Consulting, LLC utilizes NIST traceable Reference Standards and Certified Reference Material to calibrate analytical instruments along with proven analytical methods. The methods are applied in the most ethical manner following good laboratory practice guidelines. The results of this report are based solely on the sample submitted and cannot be reproduced.

This report expires 30 days after analysis date.



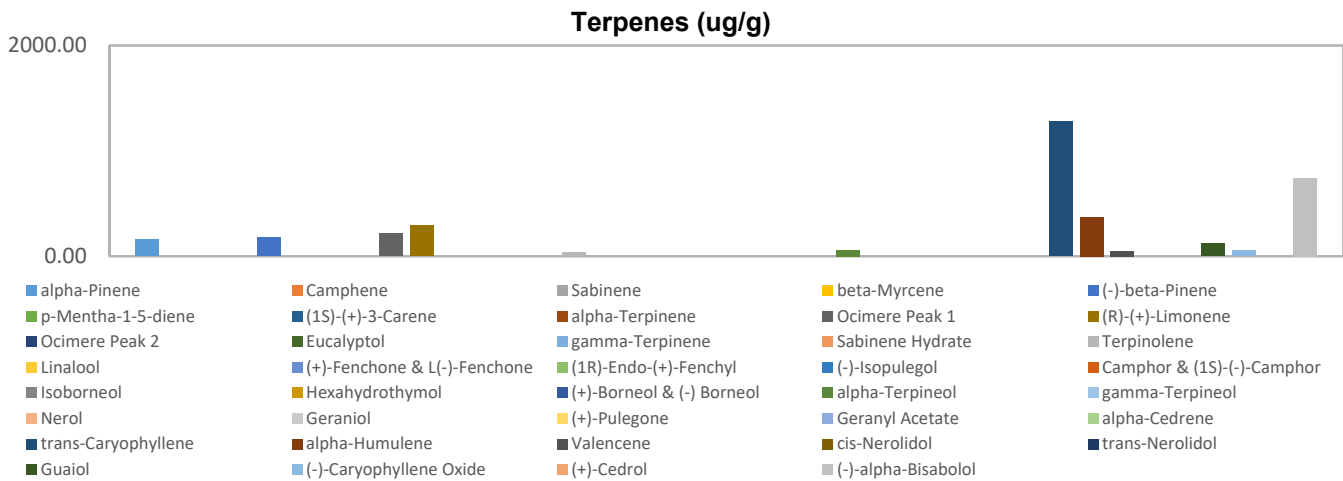
# Terpenes Profile

**Customer:** America's Finest CBD  
**Customer Sample ID:** Isolate Batch BL1903A010  
**Laboratory Number:** 201903-1520  
**Extraction Technician:** MTO  
**Analytical Chemist:** GB

Extraction Date(s)	Analysis Date(s)
3/29/2019	3/29/2019

Terpene	Results ug/g	Terpene	Results ug/g
alpha-Pinene	160.14	Isoborneol	
Camphene		Hexahydrothymol	
Sabinene		(+)-Borneol & (-) Borneol	
beta-Myrcene		alpha-Terpineol	57.22
(-)-beta-Pinene	174.73	gamma-Terpineol	
p-Mentha-1-5-diene		Nerol	
(1S)-(+)-3-Carene		Geraniol	
alpha-Terpinene		(+)-Pulegone	
Ocimere Peak 1	214.29	Geranyl Acetate	
(R)-(+)-Limonene	290.71	alpha-Cedrene	
Ocimere Peak 2		trans-Caryophyllene	1276.50
Eucalyptol		alpha-Humulene	372.12
gamma-Terpinene		Valencene	47.62
Sabinene Hydrate		cis-Nerolidol	
Terpinolene	38.40	trans-Nerolidol	
Linalool		Guaiol	119.05
(+)-Fenchone & L(-)-Fenchone		(-)-Caryophyllene Oxide	53.00
(1R)-Endo-(+)-Fenchyl		(+)-Cedrol	
(-)-Isopulegol		(-)-alpha-Bisabolol	742.70
Camphor & (1S)-(-)-Camphor			

Empty result indicates data is less than detection limit. Reporting Limit is roughly 40 ug/g depending on amount extracted.



Altitude Consulting, LLC utilizes NIST traceable Reference Standards and Certified Reference Material to calibrate analytical instruments along with proven analytical methods. The methods are applied in the most ethical manner following good laboratory practice guidelines. The results of this report are based solely on the sample submitted and cannot be reproduced.

This report expires 30 days after analysis date.



Altitude Consulting LLC  
3262 So. Platte River Drive  
Englewood, CO. 80110

Email: Gary@AltitudeConsultingllc.com  
Ph: 303.390.1662  
www.altitudeconsultingllc.com

<b>Sample Name</b>	201903-1520	<b>Operator</b>	LCTQ
<b>Sample ID</b>	Isolate Batch BL1903A010	<b>Method</b>	Triple Quad 4500
<b>Acquisition Date</b>	2019-03-30T05:30:50	<b>Result Table</b>	03292019
<b>Data File</b>	20190329.wiff	<b>Sample Type</b>	

Pesticides	Conc. (ppm)	Pos/Neg	Action Level (ppm)	Comments
ACEPHATE	0.000	NEG	0.040	
ACEQUINOCYL	0.000	NEG	0.200	
ACETAMIPRID	0.000	NEG	0.020	
ALDICARB	0.000	NEG	0.040	
ABAMECTIN	0.000	NEG	0.070	
AVERMECTIN B1B	0.000	NEG	0.070	
AZOXYSTROBIN	0.000	NEG	0.020	
BIFENAZATE	0.000	NEG	0.020	
BIFENTHRIN	0.000	NEG	0.020	
BOSCALID	0.000	NEG	0.040	
CARBARYL	0.000	NEG	0.020	
CARBOFURAN	0.000	NEG	0.020	
CHLORANTRANILIPROLE	0.000	NEG	0.020	
CHLOREFENAPYR	0.000	NEG	0.100	
CHLORPYRIFOS	0.000	NEG	0.020	
CLOFENTEZINE	0.000	NEG	0.020	
CYFLUTHRIN	0.000	NEG	0.100	
CYPERMETHRIN	0.000	NEG	0.100	
DAMINOZIDE	0.000	NEG	0.100	
DIAZINON	0.000	NEG	0.020	
DICHLORVOS	0.000	NEG	0.010	
DIMETHOATE	0.000	NEG	0.020	
ETHOPROPHOS	0.000	NEG	0.020	
ETOFENPROX	0.000	NEG	0.040	
ETOXAZOLE	0.000	NEG	0.010	
FENOXYCARB	0.000	NEG	0.020	
FENPYROXIMATE	0.000	NEG	0.040	
FIPRONIL	0.000	NEG	0.040	
FLONICAMID	0.000	NEG	0.100	
FLUDIOXONIL	0.000	NEG	0.040	
HEXYTHIAZOX	0.000	NEG	0.100	
IMAZALIL	0.000	NEG	0.040	
IMIDACLOPRID	0.000	NEG	0.020	
KRESOXIM-METHYL	0.000	NEG	0.040	

P = Present but below limit

Disclaimer: The development and performance characteristics of these tests were determined by Altitude Lab Solutions and have not been cleared by the FDA.



Altitude Consulting LLC  
3262 So. Platte River Drive  
Englewood, CO. 80110

Email: Gary@AltitudeConsultingllc.com  
Ph: 303.390.1662  
www.altitudeconsultingllc.com

MALATHION A	0.000	NEG	0.050	
METALAXYL	0.000	NEG	0.020	
METHIOCARB	0.000	NEG	0.020	
METHOMYL	0.000	NEG	0.040	
MGK 264	0.000	NEG	0.020	
MYCLOBUTANIL	0.000	NEG	0.040	
NALED	0.000	NEG	0.050	
OXAMYL	0.000	NEG	0.100	
PACLOBUTRAZOL	0.000	NEG	0.040	
PARATHION METHYL	0.000	NEG	0.100	
PERMETHRINS	0.000	NEG	0.040	
PHOSMET	0.000	NEG	0.020	
PIPERONYL BUTOXIDE	0.000	NEG	0.200	
PRALLETHRIN	0.000	NEG	0.020	
PROPICONAZOLE	0.000	NEG	0.040	
PROPOXURE	0.000	NEG	0.020	
PYRETHRINS CINERIN 1	0.000	NEG	0.500	
PYRETHRINS JASMOLIN 1	0.000	NEG	0.500	
PYRETHRINS PYRETHRIN 1	0.000	NEG	0.500	
PYRIDABEN	0.000	NEG	0.020	
SPINOSYN A	0.000	NEG	0.060	
SPINOSYN D	0.000	NEG	0.060	
SPIROMESIFEN	0.000	NEG	0.030	
SPIROTETRAMAT	0.000	NEG	0.020	
SPIROXAMINE	0.000	NEG	0.040	
TEBUCONAZOLE	0.000	NEG	0.010	
THIACLOMPRID	0.000	NEG	0.020	
THIAMETHOXAM	0.000	NEG	0.020	
TRIFLOXYSTROBIN	0.000	NEG	0.020	

P = Present but below limit

Disclaimer: The development and performance characteristics of these tests were determined by Altitude Lab Solutions and have not been cleared by the FDA.



# Residual Solvents Profile

**Customer:** America's Finest CBD  
**Customer Sample ID:** Isolate Batch BL1903A010  
**Laboratory Number:** 201903-1520  
**Extraction Technician:** MTO  
**Analytical Chemist:** GB

Extraction Date(s)	Analysis Date(s)
3/29/2019	3/29/2019

Residual Solvent	Results (ug/g)	Limits <sup>1</sup> (ug/g)	Limits <sup>2</sup> (ug/g)
Propane		100-2000	1000
Isobutane		100-2000	1000
Methanol		100-2000	
Butane		100-2000	1000
Isopropanol		100-2000	1000
Ethanol		100-2000	1000
2-Methyl Butane		100-2000	1000
Acetonitrile		100-2000	
Acetone		100-2000	1000
Pentane	113.3	100-2000	1000
Hexane		100-2000	60
Tetrahydrofuran		100-2000	
Benzene		1.0-50	2
Heptane		100-2000	1000
Toluene		50-2000	180
Ethylbenzene		100-2000	
m+p Xylene		100-2000	Total Xylene
o-Xylene		100-2000	430
1,2,3 Trimethylbenzene		100-2000	

Empty result indicates data is less than 5.0 ug/g

1: Calibration Range

2: Limits based on Colorado Code of Regulations 1CCR 212-1.

This report expires 30 days after analysis date.



# Metals/Microbial Profile

**Customer:** America's Finest CBD  
**Customer Sample ID:** Isolate Batch BL1903A010  
**Laboratory Number:** 201903-1520  
**Extraction Technician:** MTO  
**Analytical Chemist:** RH

Extraction Date(s):	Analysis Date(s)
3/29/2019	3/29/2019

Metals (ICP/MS)	Results	
	Method Code	ug/Kg (ppb)
Arsenic (As)	ICPMS.1	<20
Cadmium (Cd)	ICPMS.1	<10
Lead (Pb)	ICPMS.1	<5.0
Mercury (Hg)	ICPMS.1	<5.0

Limits for metals vary greatly depending on usage of the sample. Altitude Consulting recommends researching federal and state regulatory limits. Altitude Consulting, LLC utilizes NIST traceable Reference Standards and Certified Reference Material to calibrate analytical instruments along with proven analytical methods. The methods are applied in the most ethical manner following good laboratory practice guidelines. The results of this report are based solely on the sample submitted and cannot be reproduced.

	Results		
	Method Code		Units
Salmonella spp.	Salm.1	Negative	/1g
Non-O157 STEC*	STEC.1.b	Negative	/1g
Listeria monocytogenes	Lmono.2	Negative	/1g
Aerobic Plate Count	APC.1a	<10	CFU/g
Total Coliform Bacteria	TCEC.1a	<10	CFU/g
Escherichia coli	TCEC.1a	<10	CFU/g
Staphylococcus aureus	S.aureus.1.a	<10	CFU/g
Yeast & Mold	Y&M.1a	<10	CFU/g

Limits for microbials vary greatly depending on usage of the sample. Altitude Consulting recommends researching federal and state regulatory limits. Altitude Consulting, LLC utilizes NIST traceable Reference Standards and Certified Reference Material to calibrate analytical instruments along with proven analytical methods. The methods are applied in the most ethical manner following good laboratory practice guidelines. The results of this report are based solely on the sample submitted and cannot be reproduced.

This report expires 30 days after analysis date.