



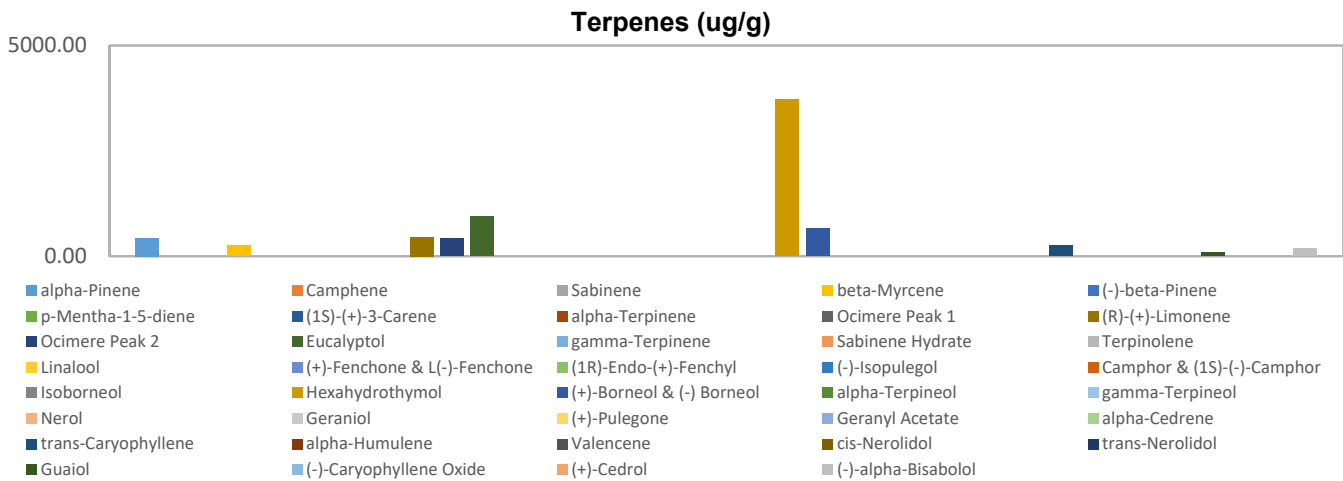
# Terpenes Profile

**Customer:** America's Finest CBD  
**Customer Sample ID:** AFC Muscle Jelly BCH A158  
**Laboratory Number:** 201901-1015  
**Extraction Technician:** MTO  
**Analytical Chemist:** GB

Extraction Date(s)	Analysis Date(s)
1/30/2019	1/30/2019

Terpene	Results ug/g	Terpene	Results ug/g
alpha-Pinene	428.22	Isoborneol	
Camphene		Hexahydrothymol	3708.81
Sabinene		(+)-Borneol & (-) Borneol	663.95
beta-Myrcene	253.67	alpha-Terpineol	
(-)-beta-Pinene		gamma-Terpineol	
p-Mentha-1-5-diene		Nerol	
(1S)-(+)-3-Carene		Geraniol	
alpha-Terpinene		(+)-Pulegone	
Ocimere Peak 1		Geranyl Acetate	
(R)-(+)-Limonene	451.06	alpha-Cedrene	
Ocimere Peak 2	419.25	trans-Caryophyllene	250.41
Eucalyptol	946.98	alpha-Humulene	
gamma-Terpinene		Valencene	
Sabinene Hydrate		cis-Nerolidol	
Terpinolene		trans-Nerolidol	
Linalool		Guaiol	90.54
(+)-Fenchone & L(-)-Fenchone		(-)-Caryophyllene Oxide	
(1R)-Endo-(+)-Fenchyl		(+)-Cedrol	
(-)-Isopulegol		(-)-alpha-Bisabolol	172.10
Camphor & (1S)-(-)-Camphor			

Empty result indicates data is less than detection limit. Reporting Limit is roughly 40 ug/g depending on amount extracted.



Altitude Consulting, LLC utilizes NIST traceable Reference Standards and Certified Reference Material to calibrate analytical instruments along with proven analytical methods. The methods are applied in the most ethical manner following good laboratory practice guidelines. The results of this report are based solely on the sample submitted and cannot be reproduced.



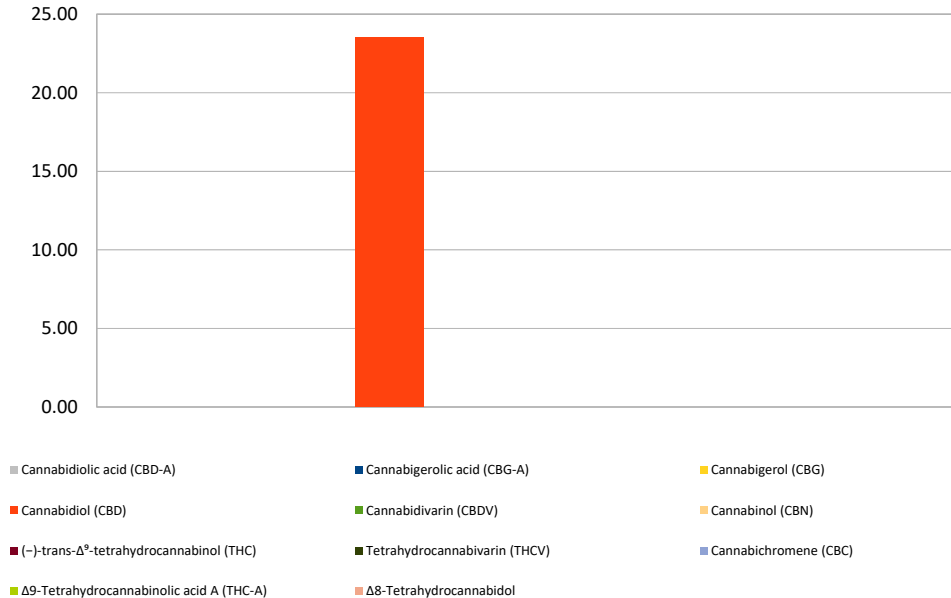
# Cannabinoid Profile

**Customer:** America's Finest CBD  
**Customer Sample ID:** AFC Muscle Jelly BCH A158  
**Laboratory Number:** 201901-1015  
**Extraction Technician:** MTO  
**Analytical Chemist:** GB

Extraction Date(s):	Analysis Date(s)
1/30/2019	1/30/2019

Cannabinoid (HPLC)		Results	
	LOD (mg/g)	Percent	mg/g
Δ8-Tetrahydrocannabinol	<0.2		
Cannabidiolic acid (CBD-A)	<0.2		
Cannabigerolic acid (CBG-A)	<0.2		
Cannabigerol (CBG)	<0.2		
Cannabidiol (CBD)		2.35%	23.52
Cannabidivarin (CBDV)	<0.2		
Cannabinol (CBN)	<0.2		
(-)-trans-Δ <sup>9</sup> -tetrahydrocannabinol (THC)	<0.2		
Tetrahydrocannabivarin (THCV)	<0.2		
Cannabichromene (CBC)	<0.2		
Δ9-Tetrahydrocannabinolic acid A (THC-A)	<0.2		
Cannabinoids Total		Percent	mg/g
<b>Max Active THC</b>		<b>0.00%</b>	<b>0.00</b>
<b>Max Active CBD</b>		<b>2.35%</b>	<b>23.52</b>
<b>T. Active Cannabinoids</b>		<b>2.35%</b>	<b>23.52</b>
<b>Total Cannabinoids</b>		<b>2.35%</b>	<b>23.52</b>
Ratios			
<b>NA CBD to THC</b>		<b>0.00 :1 THC to CBD</b>	

Cannabinoid (mg/g)



Altitude Consulting, LLC utilizes NIST traceable Reference Standards and Certified Reference Material to calibrate analytical instruments along with proven analytical methods. The methods are applied in the most ethical manner following good laboratory practice guidelines. The results of this report are based solely on the sample submitted and cannot be reproduced.